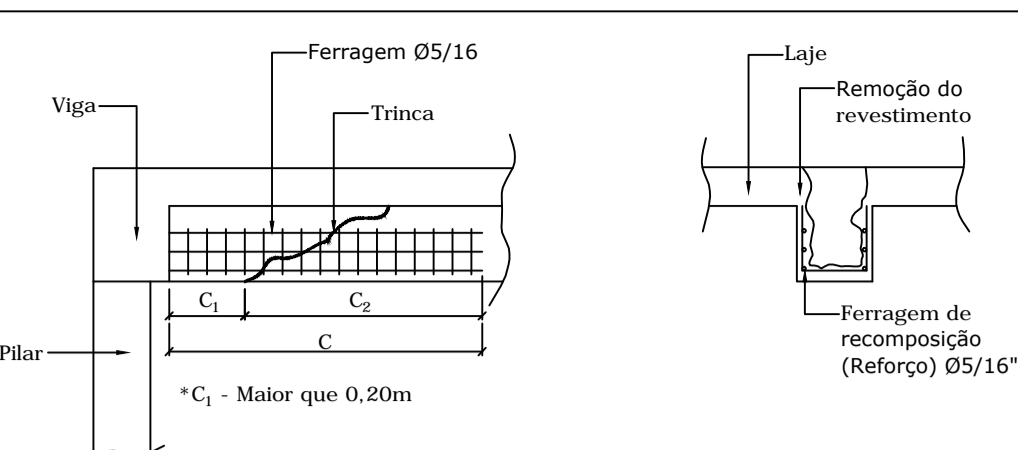


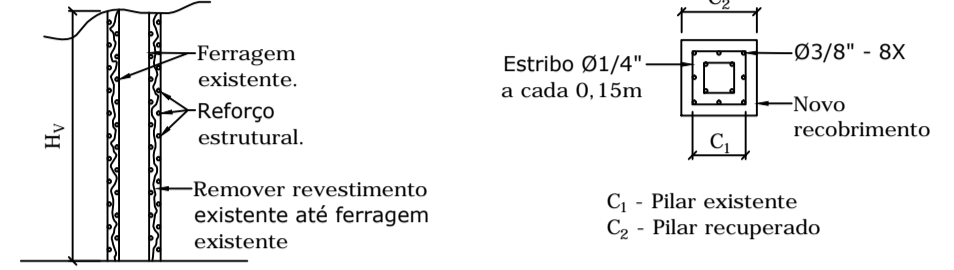
PLANTA
esc 1:100

LEGENDA

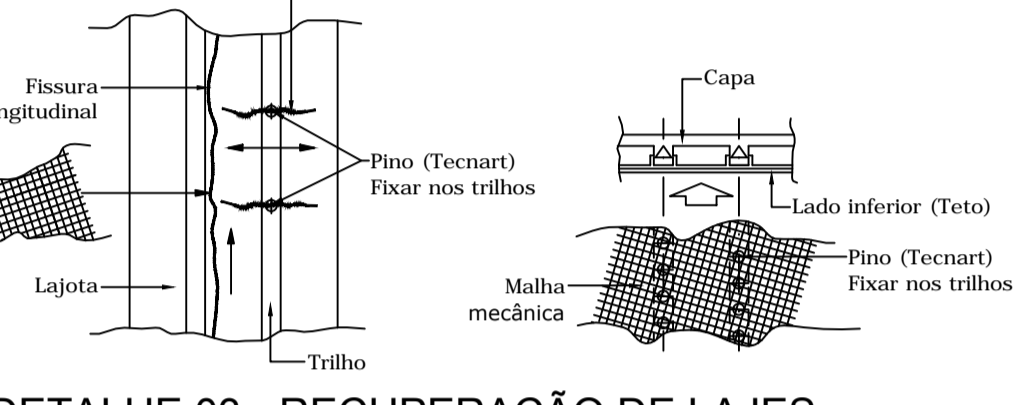
 CONSTRUIR/INSTALAR
 DEMOLIR/RETRAIAR



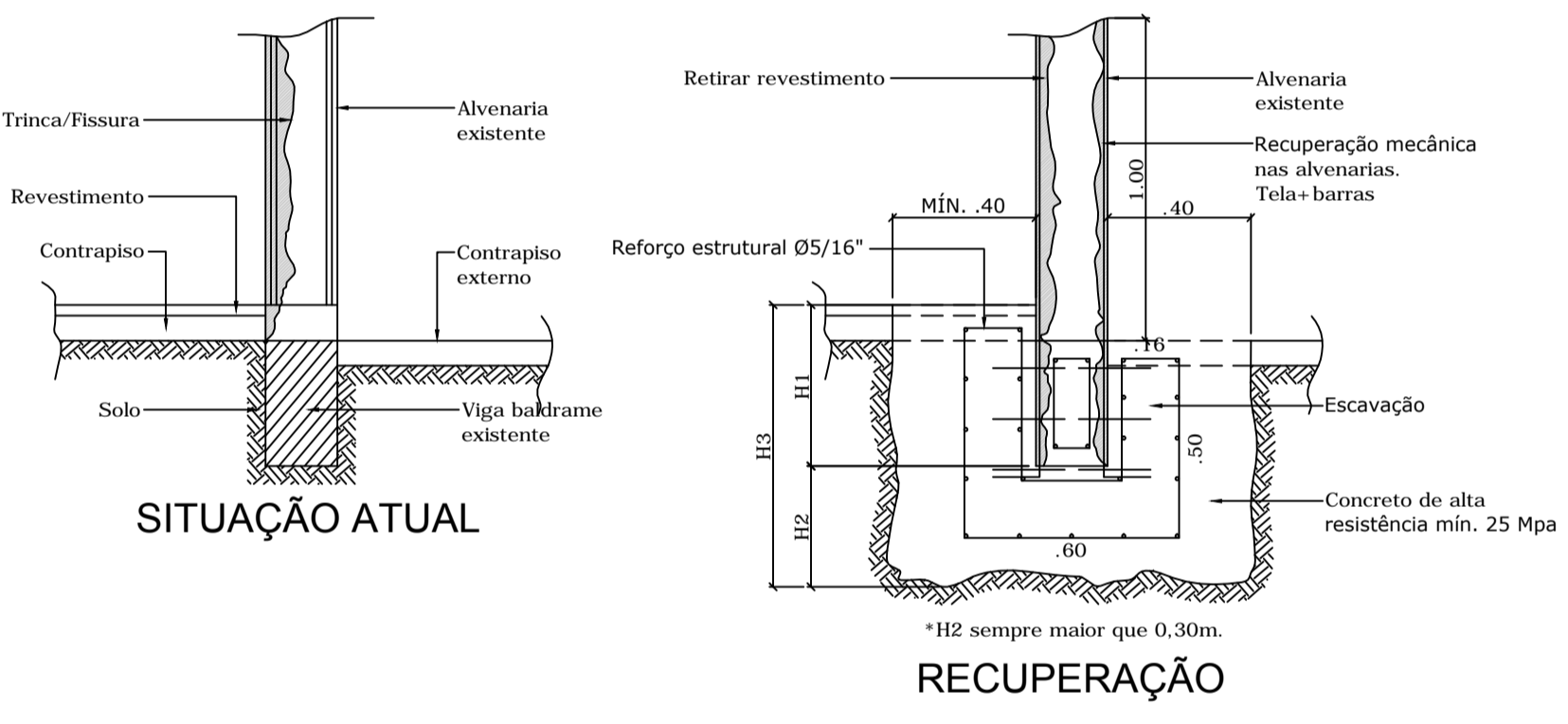
DETALHE 01 - RECUPERAÇÃO DE VIGAS
esc 1:20



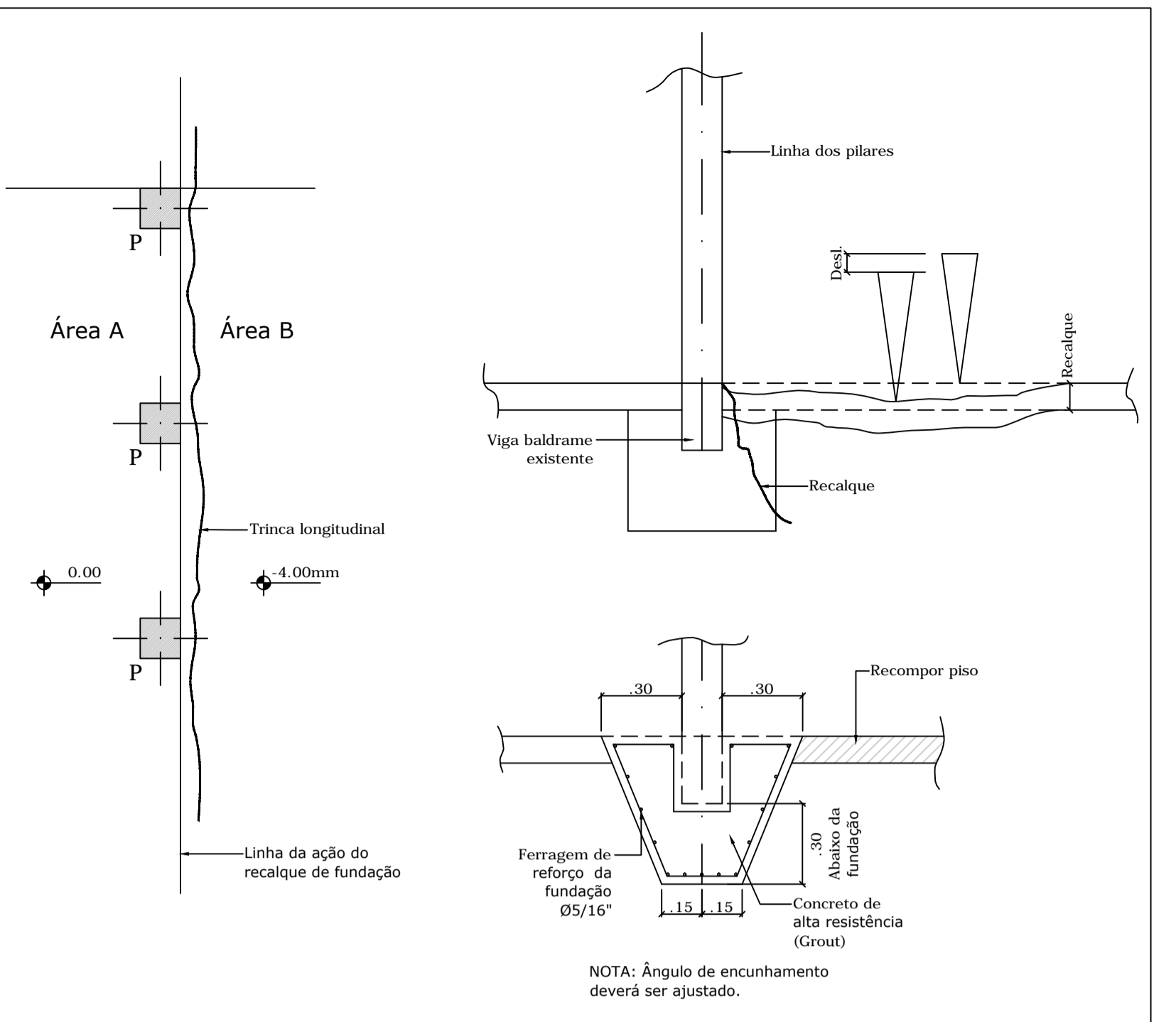
DETALHE 02 - RECUPERAÇÃO DE PILARES
esc 1:20



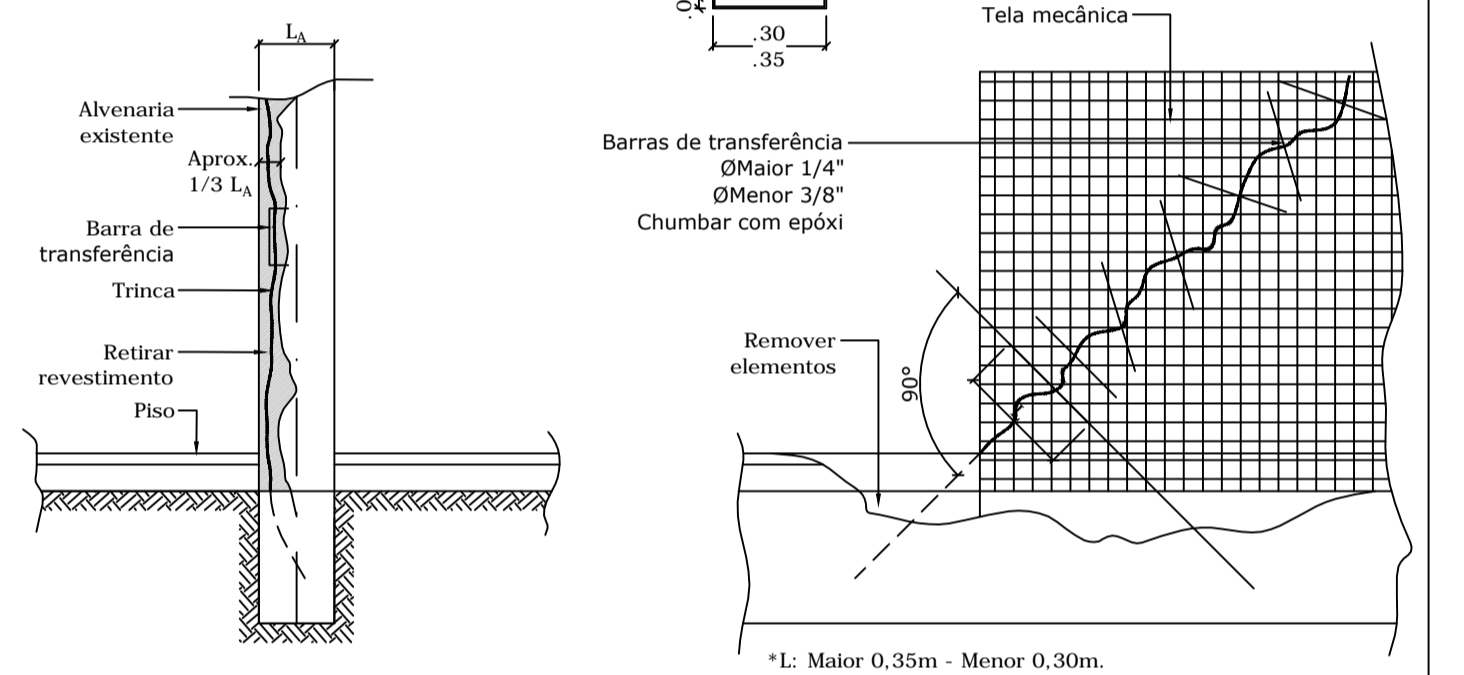
DETALHE 03 - RECUPERAÇÃO DE LAJES
esc 1:20



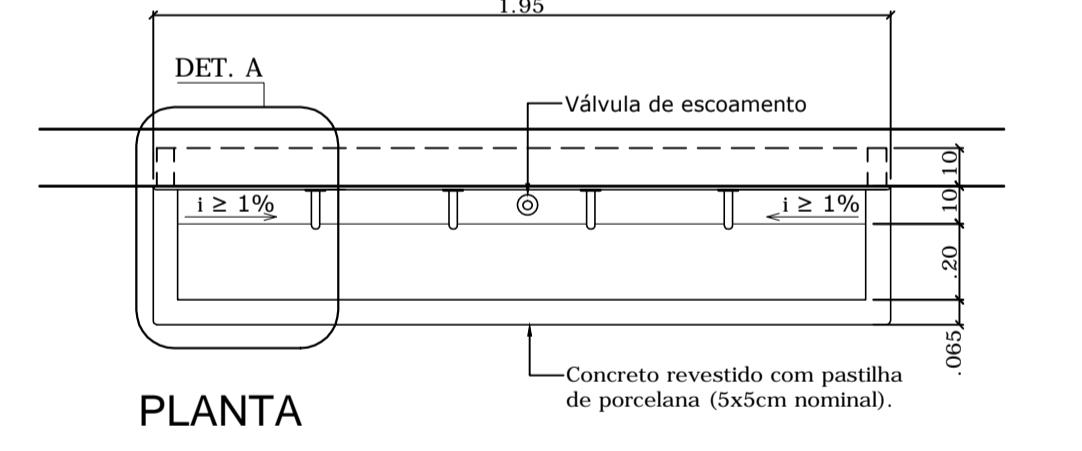
DETALHE 04 - RECUPERAÇÃO DA FUNDAÇÃO
esc 1:20



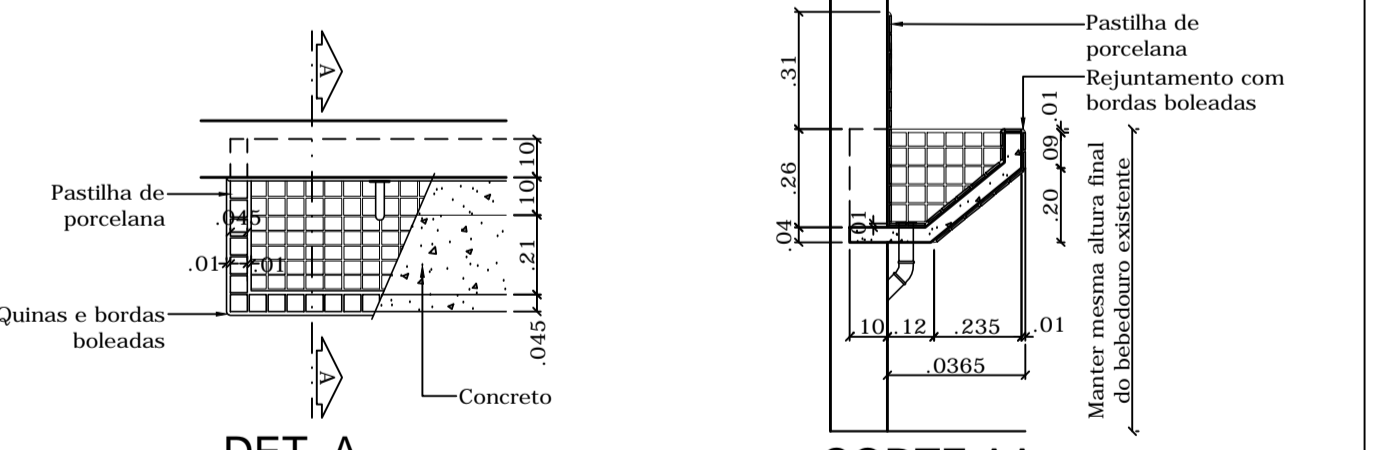
DETALHE 05 - RECUPERAÇÃO DO PISO
esc 1:20



DETALHE 06 - RECUPERAÇÃO DAS ALVENARIAS
esc 1:20



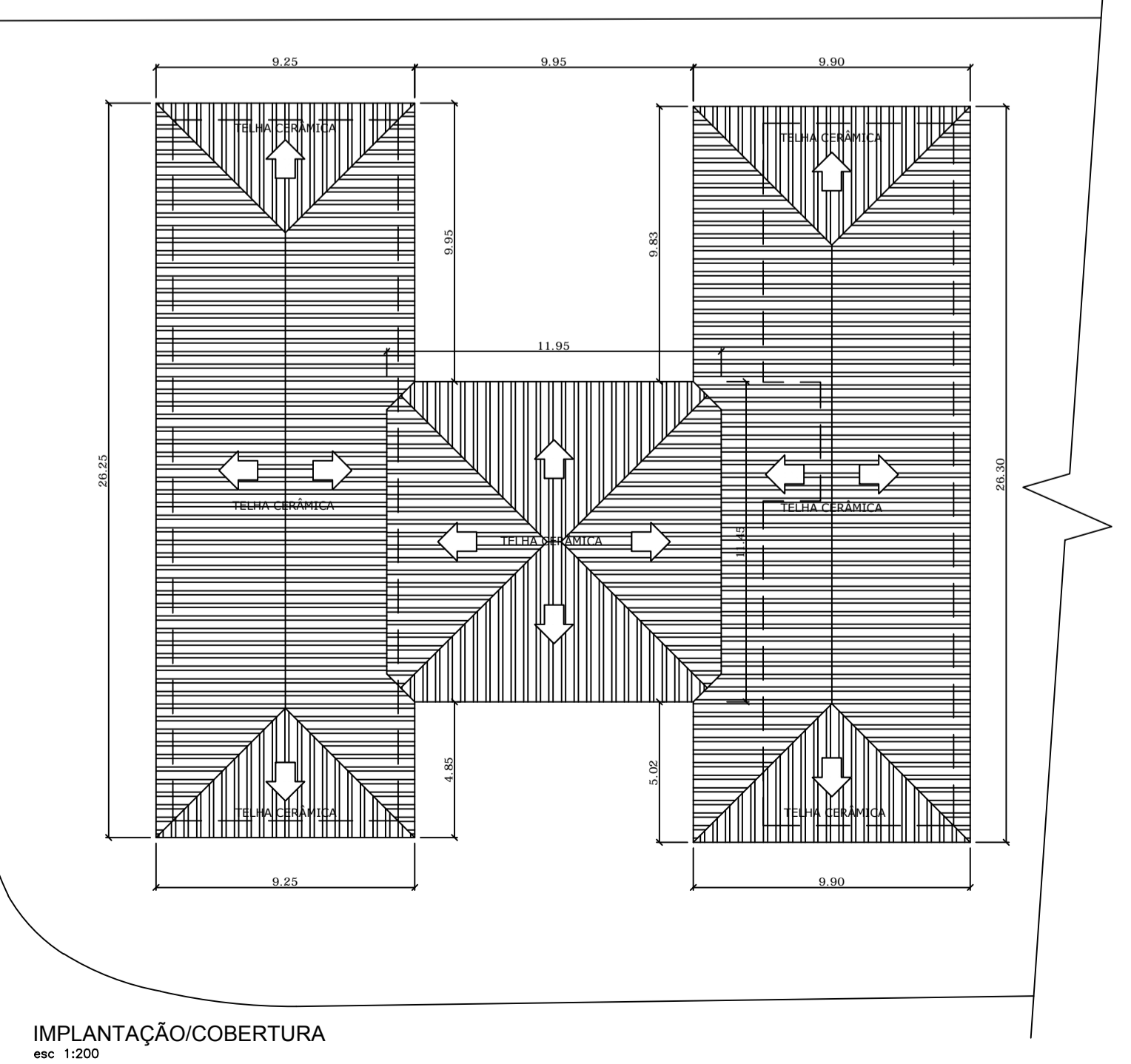
PLANTA



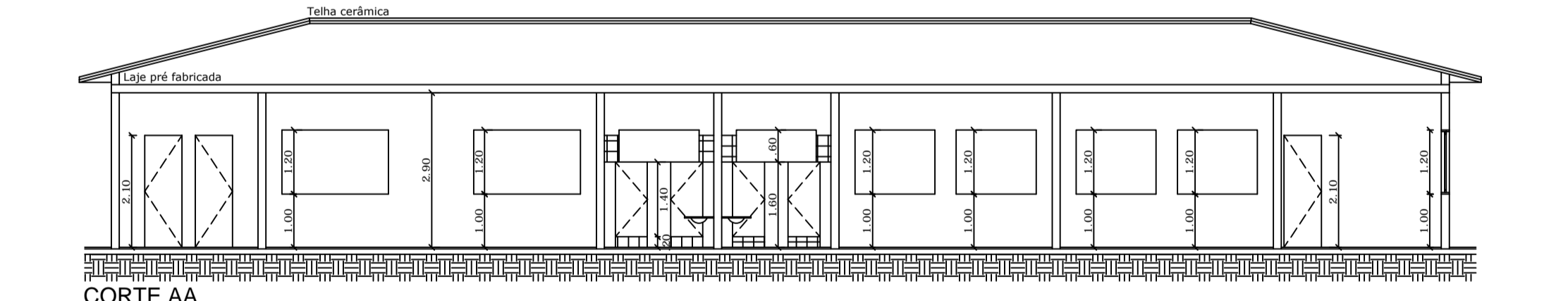
DET. A

CORTE AA

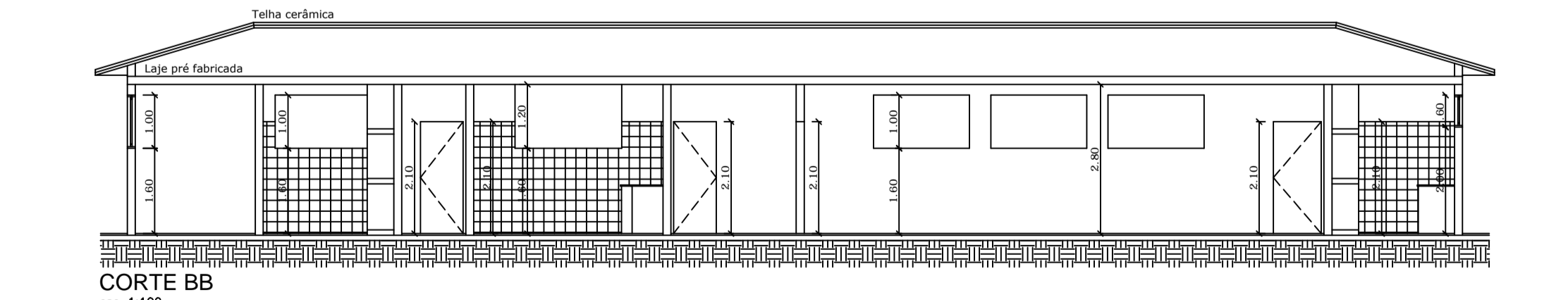
DETALHE 07 - BEBEDOURO
esc 1:20



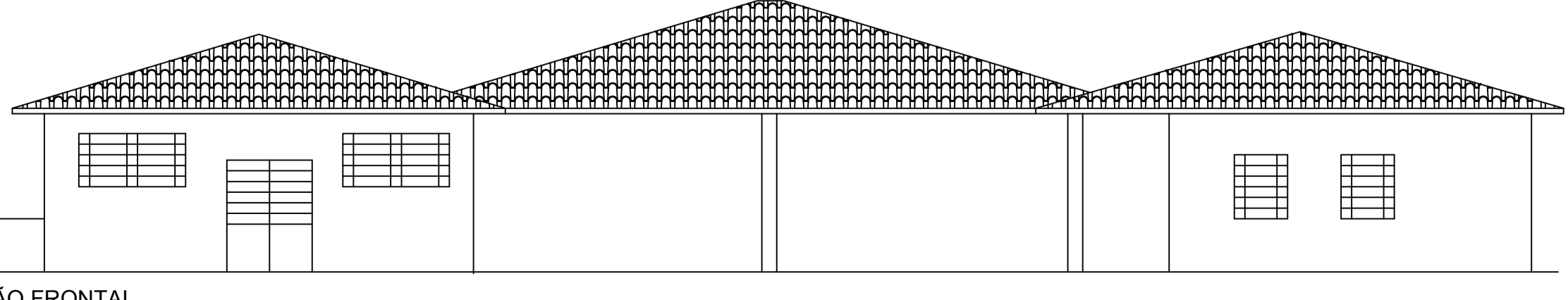
IMPLANTAÇÃO/COBERTURA
esc 1:200



CORTE AA
esc 1:100



CORTE BB
esc 1:100



ELEVÇÃO FRONTAL
esc 1:100

PREFEITURA MUNICIPAL DE PEDREIRA
Praça Epitácio Pessoa, nº 03 - Centro - Pedreira-SP

SECRETARIA MUNICIPAL DE OBRAS E VIAS PÚBLICAS
Rua Antonio Vicente Castelo, nº 180 - Parque Bela Vista - Pedreira-SP

PROJETO LOCAL - REFORMA DA C.I.M.E.I. WILSON THOMAZINI
RUA SERGIO COZER, 500
JD. MARAJOARA, PEDREIRA-SP

ESCALA INDICADA
FOLHA 01/01

APROVAÇÃO

PREFEITURA MUNICIPAL DE PEDREIRA
HAMILTON BERNARDES JUNIOR
PREFEITO MUNICIPAL

AUTORA DO PROJETO E RESP. TÉCNICA CREA 5080121555
ENGENHEIRA CIVIL: EDNA ELIANA NERY